



AMERICAN EAGLE INSTRUMENTS® INC

*Proudly Introduces*



Boge 513™



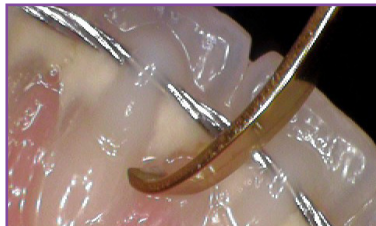
Boge 513



AE S B513 XP X

AE S B513 XP Z

Anterior



## Boge 513™ Scaler

### Features of hoe end

- Features an elongated shank with straight, slightly lipped cutting edge
- Specifically designed to maintain stability during vertical and horizontal working strokes

### Indication of hoe end

- marginal recession
- exposed root surfaces
- fixed orthodontic wires
- upper and lower anterior intraoral regions

### Features of Nebraska 128 end

- Features an elongated shank with continuous, straight lateral surface

### Indication of N128 end

- interproximal contact areas
- areas with crowding and/or recession



**QUIK-TIP**<sup>®</sup>  
CONE SOCKET INSTRUMENTS

Also available in **Quik-Tip cone sockets** featuring replaceable tips and reusable handles!